

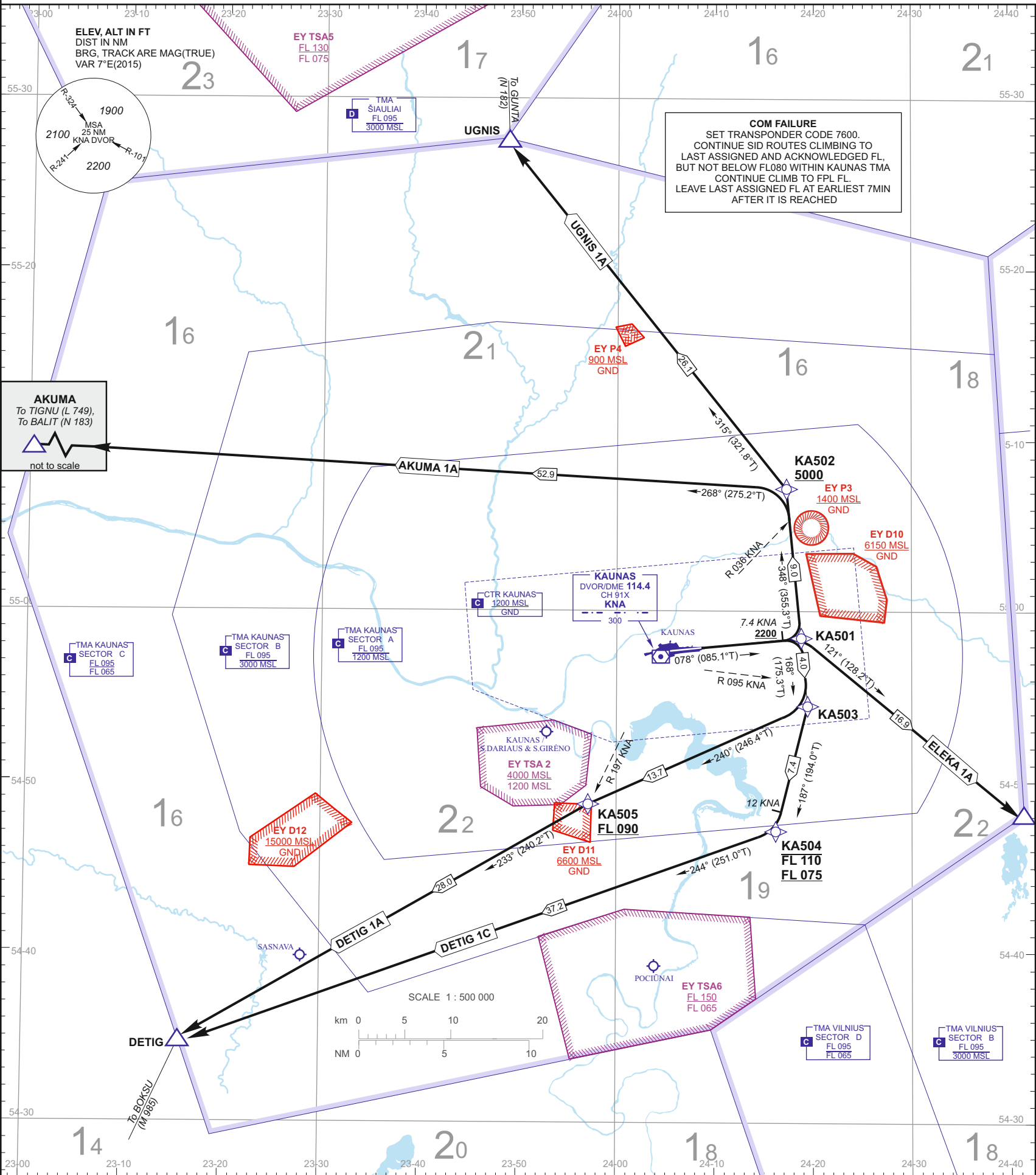
RNAV (GNSS, VOR/DME) OVERLAY
STANDARD DEPARTURE CHART
INSTRUMENT (SID) - ICAO

TRANSITION ALTITUDE 5000

TWR 124.200
118.500
ATIS 129.050

KAUNAS
RWY 08

AKUMA 1A, DETIG 1A, DETIG 1C,
ELEKA 1A, UGNIS 1A



STANDARD INSTRUMENT DEPARTURE (SID) ROUTES RWY 08

SID NAME	ROUTE
AKUMA 1A	Climb on course 078° to KNA DME 7.4 NM (at 2200 FT MSL or above), then turn left on track 348°. Cross R-036 KNA (at 5000 FT MSL or above), turn left on track 268° and proceed to AKUMA.
DETIG 1A	Climb on course 078° to KNA DME 7.4 NM (at 2200 FT MSL or above), then turn right on track 168°. Cross R-095 KNA, turn right on track 240°. Cross R-197 KNA (at FL090 or above), turn left on track 233° and proceed to DETIG.
DETIG 1C	Climb on course 078° to KNA DME 7.4 NM (at 2200 FT MSL or above), then turn right on track 168°. Cross R-095 KNA, turn right on track 187°. At KNA DME 12 NM (block level FL075 - FL110*), turn right on track 244° and proceed to DETIG.
ELEKA 1A	Climb on course 078° to KNA DME 7.4 NM (at 2200 FT MSL or above), then turn right on track 121° and proceed to ELEKA.
UGNIS 1A	Climb on course 078° to KNA DME 7.4 NM (at 2200 FT MSL or above), then turn left on track 348°. Cross R-036 KNA (at 5000 FT MSL or above), turn left on track 315° and proceed to UGNIS.

RNAV SID RWY 08 WAY POINT CODING (All segments from KA501 – TF legs)

SID NAME	ROUTE
AKUMA 1A (61.9 NM)	KA501[A2200+;L] - KA502[A5000+;L] - AKUMA
DETIG 1A (45.7 NM)	KA501[A2200+;R] - KA503[R] - KA505[F090+;L] - DETIG
DETIG 1C (48.6 NM)	KA501[A2200+;R] - KA503[R] - KA504[F075+;F110-*,R] - DETIG
ELEKA 1A (16.9 NM)	KA501[A2200+;R] - ELEKA
UGNIS 1A (35.1 NM)	KA501[A2200+;L] - KA502[A5000+;L] - UGNIS

Remark: After take-off climb to 4000 FT MSL. Unless otherwise specified by ATC.

Note: *Unless otherwise instructed by ATC

FOR DETAILED FLIGHT PROCEDURES REFER TO AIP EYKA AD 2.22

WAY POINT COORDINATES

KA501	54 58 28.9N 024 18 25.7E	KNA R077.2/D8.4
KA502	55 07 26.2N 024 17 08.0E	KNA R030.7/D12.4
KA503	54 54 30.1N 024 19 00.1E	KNA R103.0/D9.2
KA504	54 47 21.6N 024 15 55.8E	KNA R139.3/D12.4
KA505	54 49 00.6N 023 57 20.6E	KNA R197.2/D9.4
AKUMA	55 11 37.8N 022 45 10.6E	KNA R281.0/D47.4
DETIG	54 35 00.8N 023 15 34.0E	KNA R224.6/D36.0
ELEKA	54 48 01.6N 024 41 20.1E	KNA R107.0/D23.6
UGNIS	55 27 50.9N 023 48 44.5E	KNA R337.2/D31.5
KNA	54 57 37.4N 024 03 59.1E	

THIS PAGE INTENTIONALLY LEFT BLANK